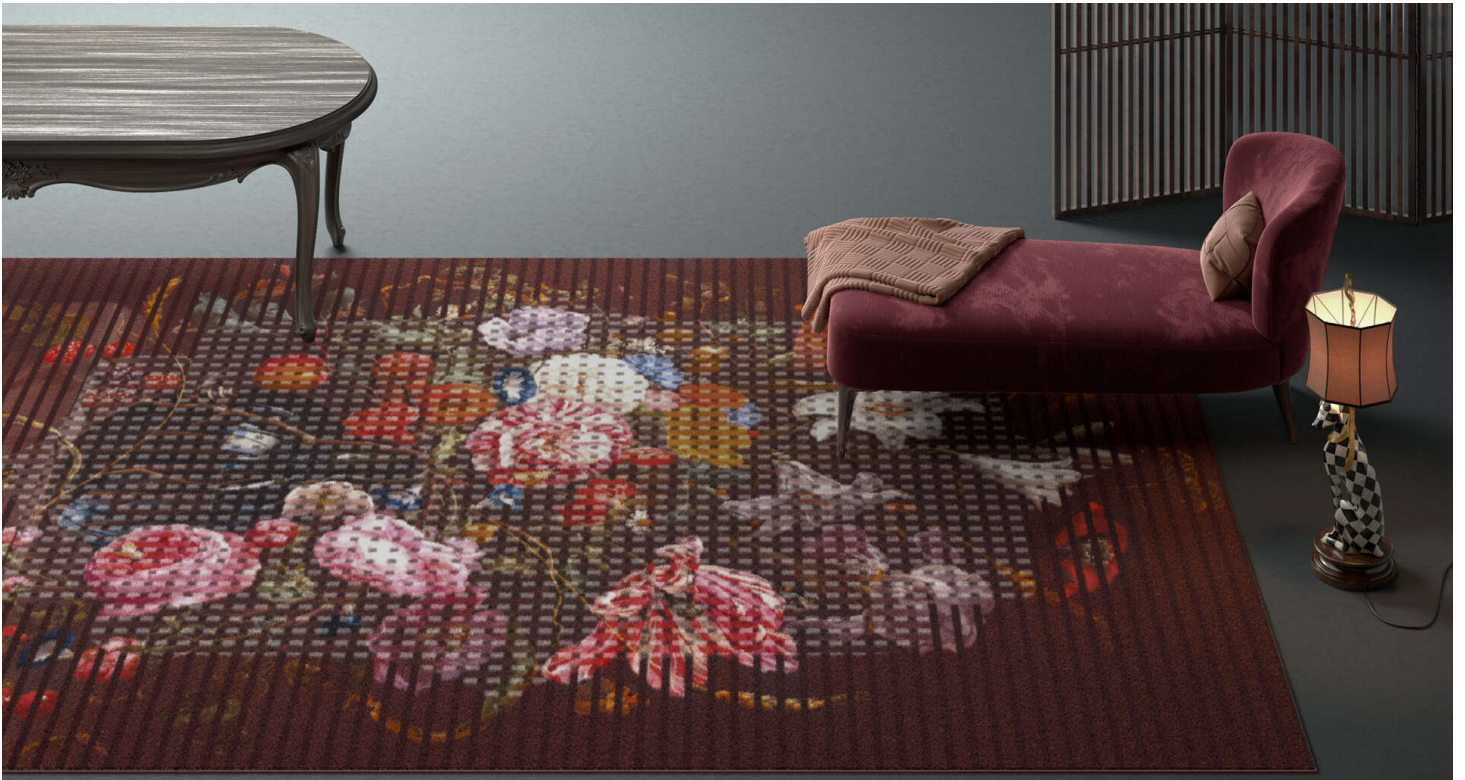


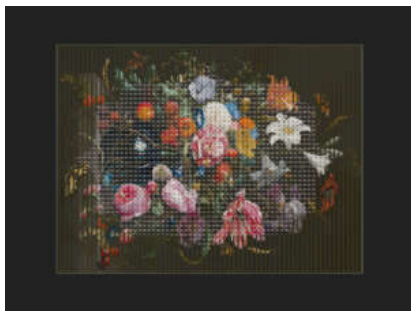
ES3.03

**ES3.03.1**



200 x 300 cm

400 x 300 cm

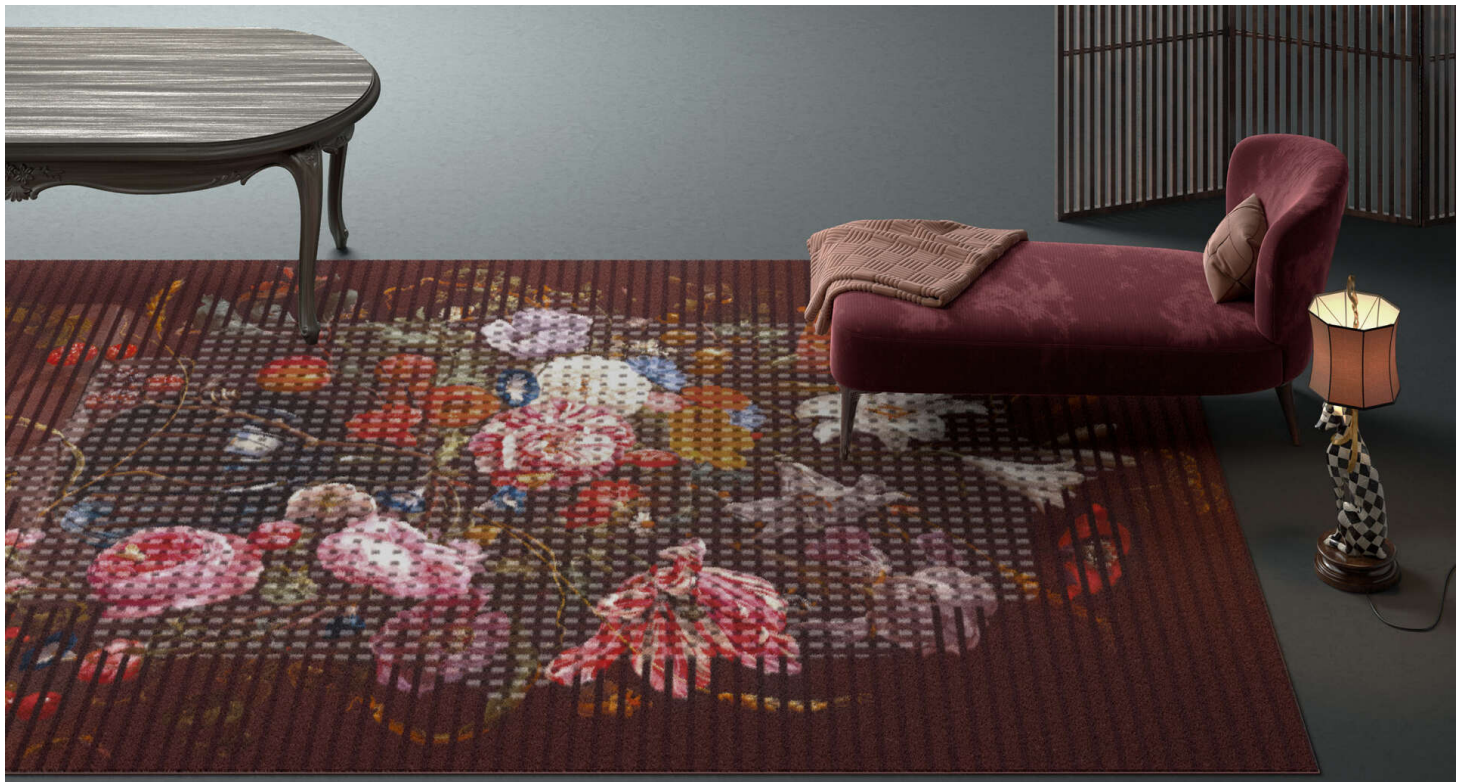


ES3.03

AVAILABLE AS BROADLOOM

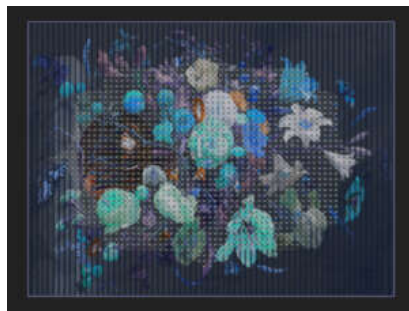
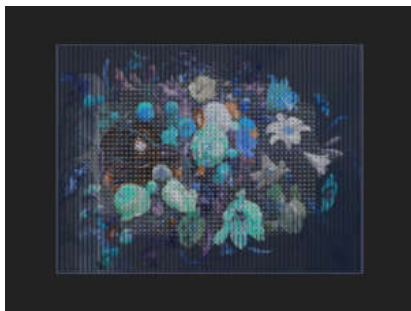
**ES3.03.1**

Type of manufacture:	Tufting 1/10"
Pile material:	100% Polyamid PA 6
Structure:	Heat-set velour/Saxony
Classification for use:	23/33 commercial general
Comfort rating:	LC 5
Total thickness:	+/- 9,4 mm
Number of knots:	+/- 237000 /m2
Flammability:	Bfl – s1
Colour:	Personalized colour options
Also available in broadloom:	PA 2020 Action



200 x 300 cm

400 x 300 cm

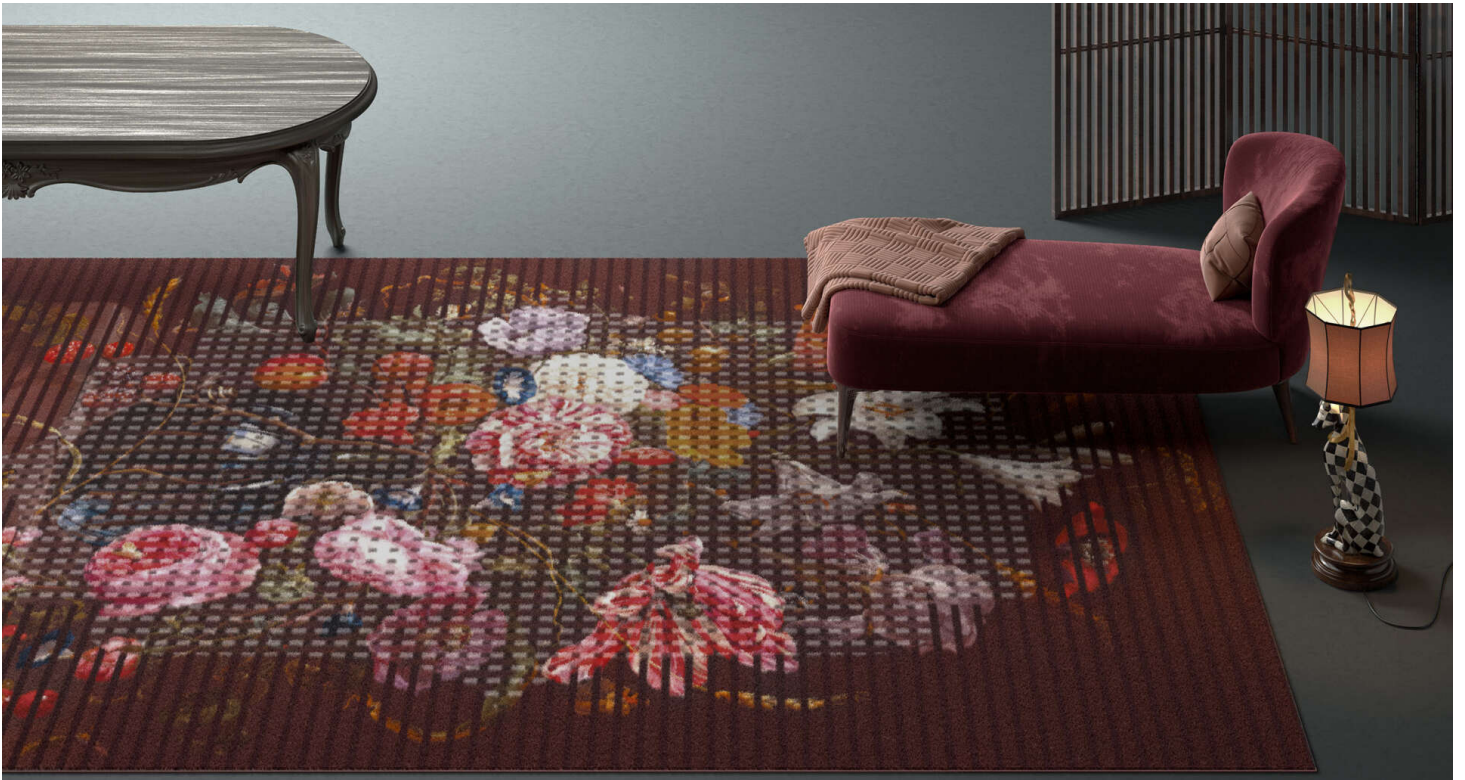


ES3.03

AVAILABLE AS BROADLOOM

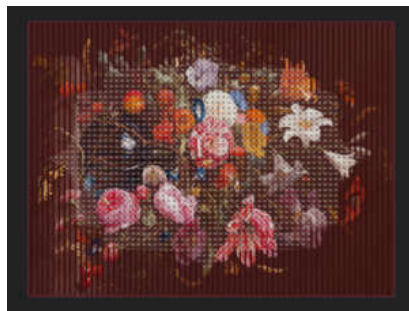
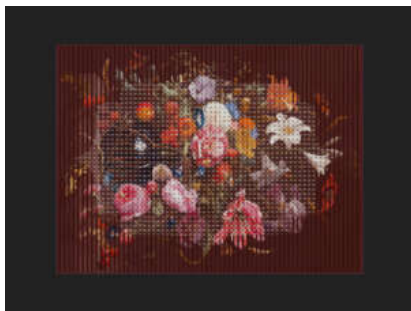
**ES3.03.2**

Type of manufacture:	Tufting 1/10"
Pile material:	100% Polyamid PA 6
Structure:	Heat-set velour/Saxony
Classification for use:	23/33 commercial general
Comfort rating:	LC 5
Total thickness:	+/- 9,4 mm
Number of knots:	+/- 237000 /m2
Flammability:	Bfl – s1
Colour:	Personalized colour options
Also available in broadloom:	PA 2020 Action



200 x 300 cm

400 x 300 cm



ES3.03

AVAILABLE AS BROADLOOM

**ES3.03.3**

Type of manufacture:	Tufting 1/10"
Pile material:	100% Polyamid PA 6
Structure:	Heat-set velour/Saxony
Classification for use:	23/33 commercial general
Comfort rating:	LC 5
Total thickness:	+/- 9,4 mm
Number of knots:	+/- 237000 /m2
Flammability:	Bfl – s1
Colour:	Personalized colour options
Also available in broadloom:	PA 2020 Action