

RC3.01

**RC3.01.1**



200 x 300 cm

400 x 300 cm



RC3.01

AVAILABLE AS BROADLOOM

RC3.01.1

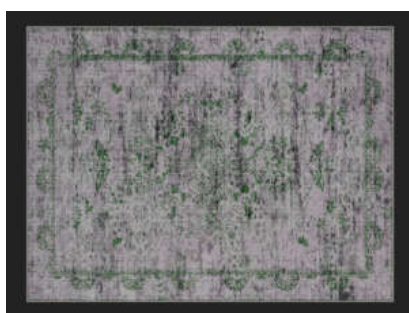
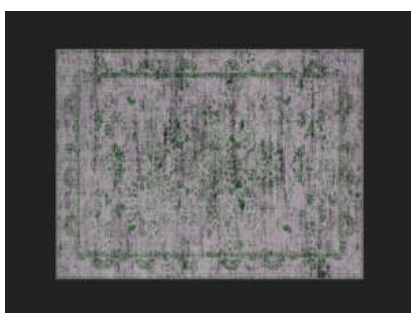
|                         |                             |
|-------------------------|-----------------------------|
| Type of manufacture:    | Tufting 1/10"               |
| Pile material:          | 100% PA 6.6                 |
| Structure:              | Heat-set velour/Saxony      |
| Classification for use: | 32 commercial general       |
| Comfort rating:         | LC5                         |
| Total thickness:        | Ca. 13,50 mm                |
| Number of tufts:        | Ca. 193.000 /m2             |
| Impact sound reduction: | ?Lw ca. 25 dB               |
| Flammability:           | Cfl – s1                    |
| Colour:                 | Personalized colour options |
| Broadloom width:        | 400 cm                      |
| Also available in:      | PA 2900 Essential           |





200 x 300 cm

400 x 300 cm



RC3.01

AVAILABLE AS BROADLOOM

RC3.01.2

|                         |                             |
|-------------------------|-----------------------------|
| Type of manufacture:    | Tufting 1/10"               |
| Pile material:          | 100% PA 6.6                 |
| Structure:              | Heat-set velour/Saxony      |
| Classification for use: | 32 commercial general       |
| Comfort rating:         | LC5                         |
| Total thickness:        | Ca. 13,50 mm                |
| Number of tufts:        | Ca. 193.000 /m2             |
| Impact sound reduction: | ?Lw ca. 25 dB               |
| Flammability:           | Cfl – s1                    |
| Colour:                 | Personalized colour options |
| Broadloom width:        | 400 cm                      |
| Also available in:      | PA 2900 Essential           |



200 x 300 cm

400 x 300 cm



RC3.01

AVAILABLE AS BROADLOOM

**RC3.01.3**

|                         |                             |
|-------------------------|-----------------------------|
| Type of manufacture:    | Tufting 1/10"               |
| Pile material:          | 100% PA 6.6                 |
| Structure:              | Heat-set velour/Saxony      |
| Classification for use: | 32 commercial general       |
| Comfort rating:         | LC5                         |
| Total thickness:        | Ca. 13,50 mm                |
| Number of tufts:        | Ca. 193.000 /m2             |
| Impact sound reduction: | ?Lw ca. 25 dB               |
| Flammability:           | Cfl – s1                    |
| Colour:                 | Personalized colour options |
| Broadloom width:        | 400 cm                      |
| Also available in:      | PA 2900 Essential           |