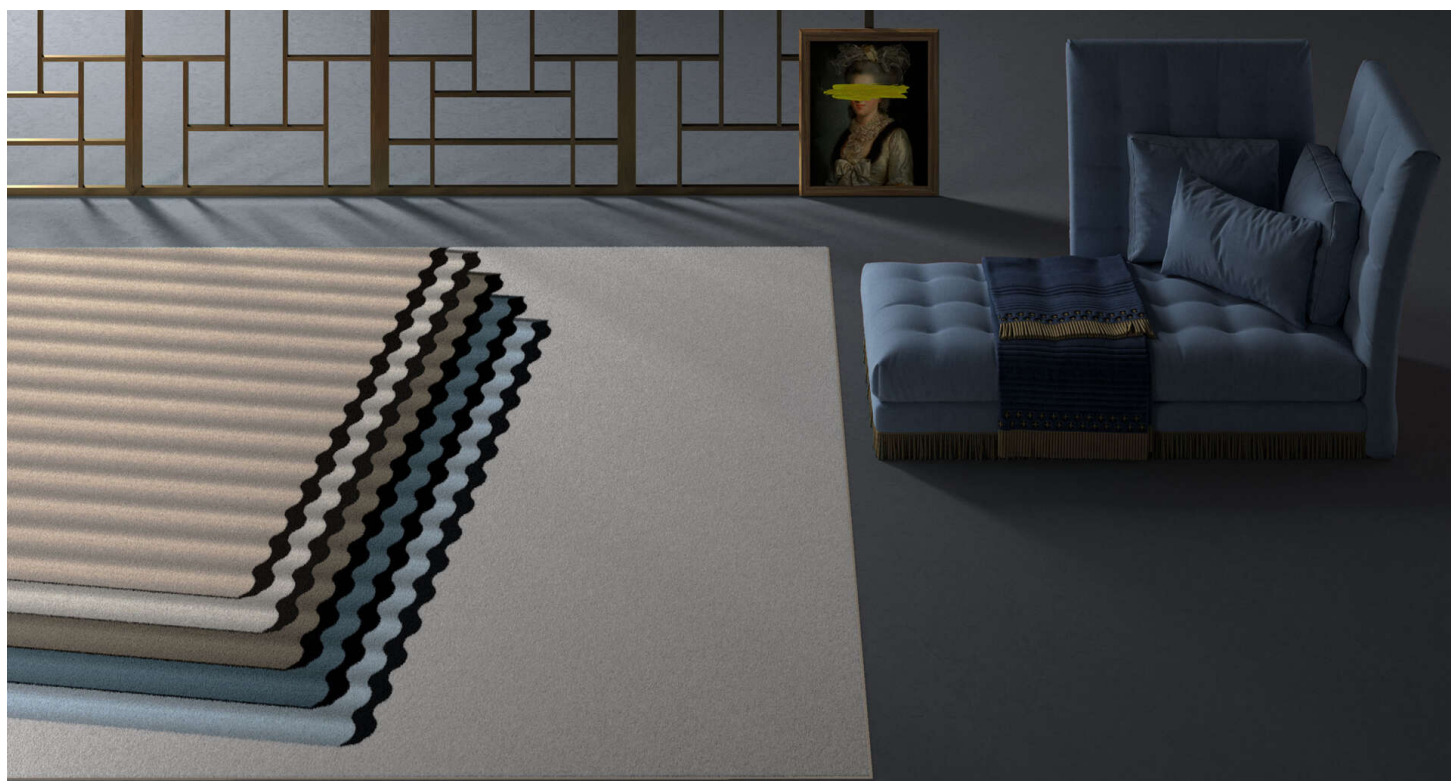


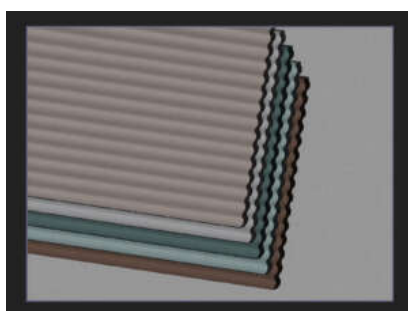
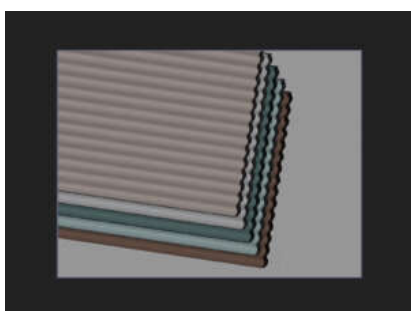
ST3.03

ST3.03.1



200 x 300 cm

300 x 400 cm

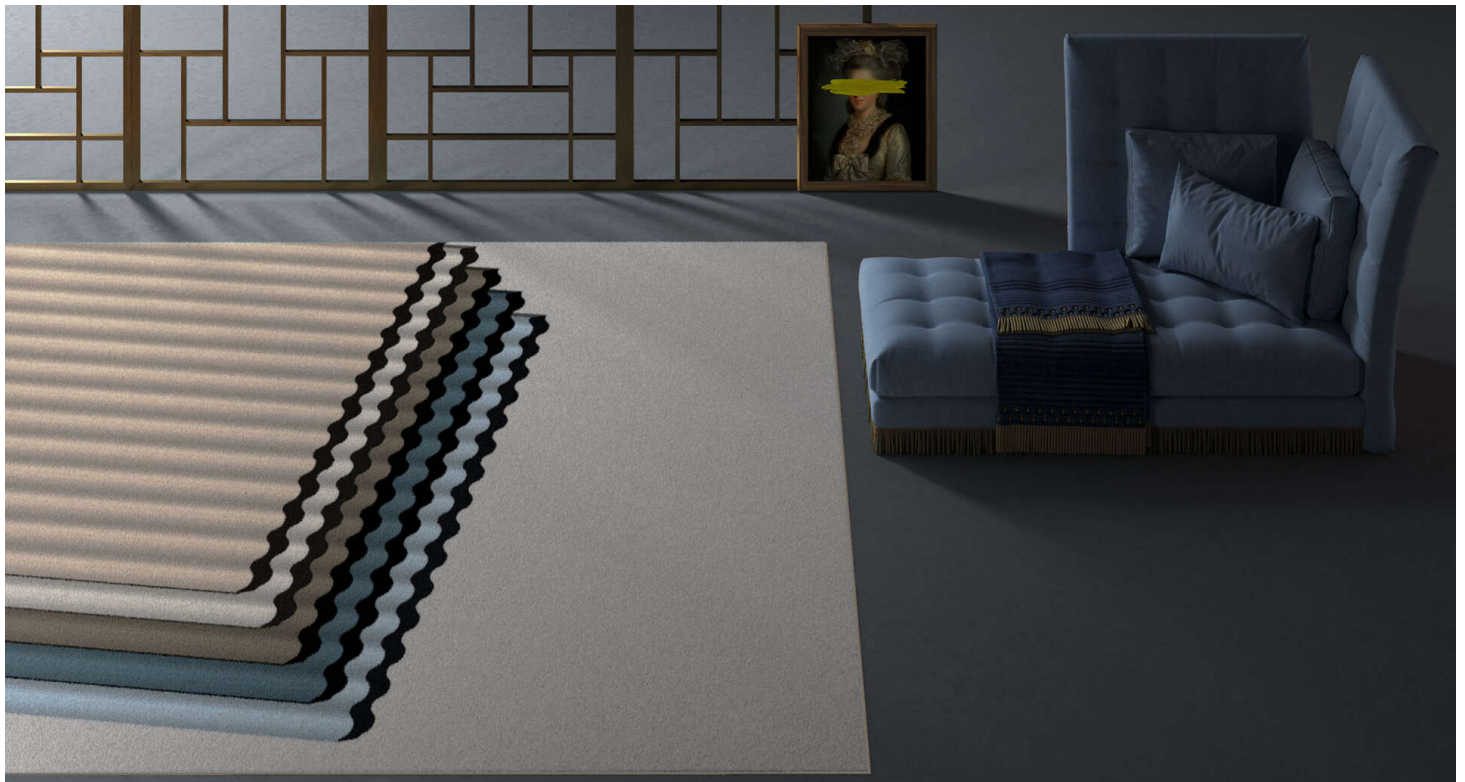


ST3.03

AVAILABLE AS BROADLOOM

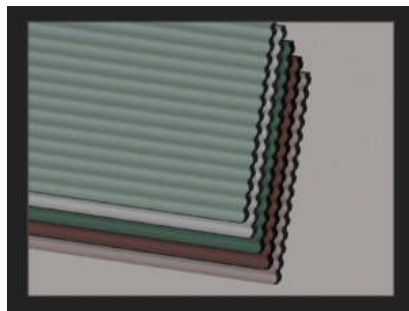
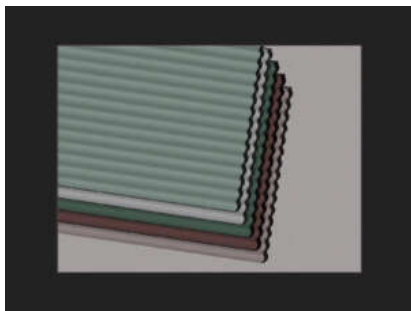
ST3.03.1

Type of manufacture:	Tufting 1/10"
Pile material:	100% Polyamid PA 6
Structure:	Heat-set velour/Saxony
Classification for use:	23/33 commercial general
Comfort rating:	LC 5
Total thickness:	+/- 9,4 mm
Number of tufts:	+/- 237000 /m2
Flammability:	Bfl – s1
Colour:	Personalized colour options



200 x 300 cm

300 x 400 cm

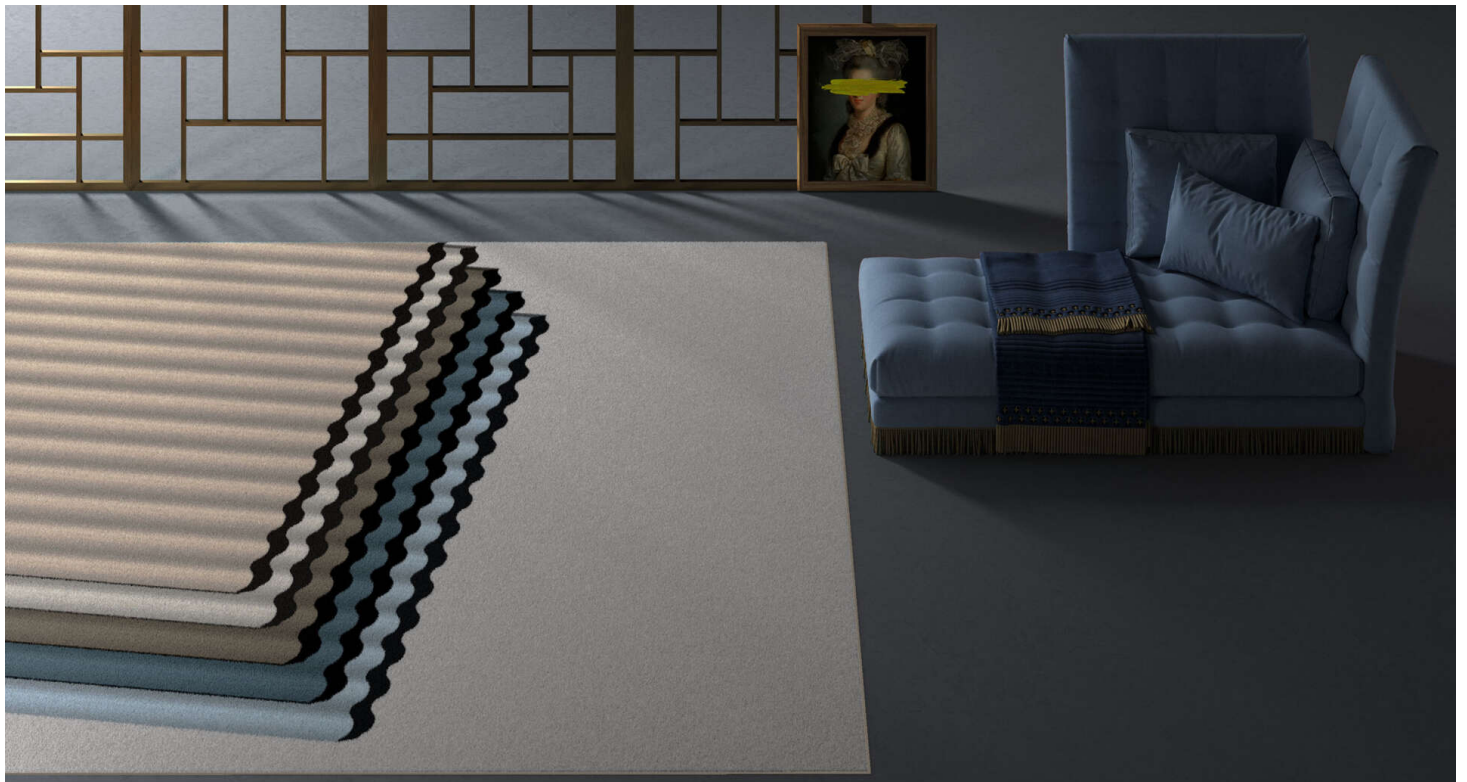


ST3.03

AVAILABLE AS BROADLOOM

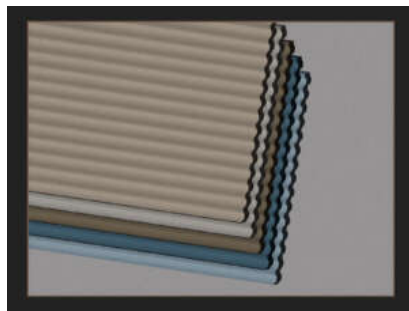
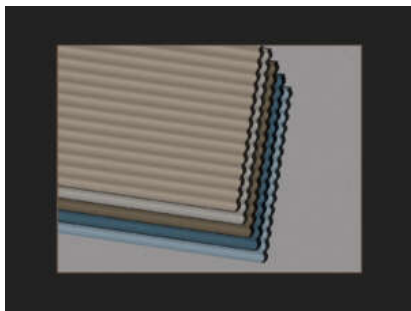
ST3.03.2

Type of manufacture:	Tufting 1/10"
Pile material:	100% Polyamid PA 6
Structure:	Heat-set velour/Saxony
Classification for use:	23/33 commercial general
Comfort rating:	LC 5
Total thickness:	+/- 9,4 mm
Number of tufts:	+/- 237000 /m2
Flammability:	Bfl – s1
Colour:	Personalized colour options



200 x 300 cm

300 x 400 cm



ST3.03

AVAILABLE AS BROADLOOM

ST3.03.3

Type of manufacture:	Tufting 1/10"
Pile material:	100% Polyamid PA 6
Structure:	Heat-set velour/Saxony
Classification for use:	23/33 commercial general
Comfort rating:	LC 5
Total thickness:	+/- 9,4 mm
Number of tufts:	+/- 237000 /m2
Flammability:	Bfl – s1
Colour:	Personalized colour options