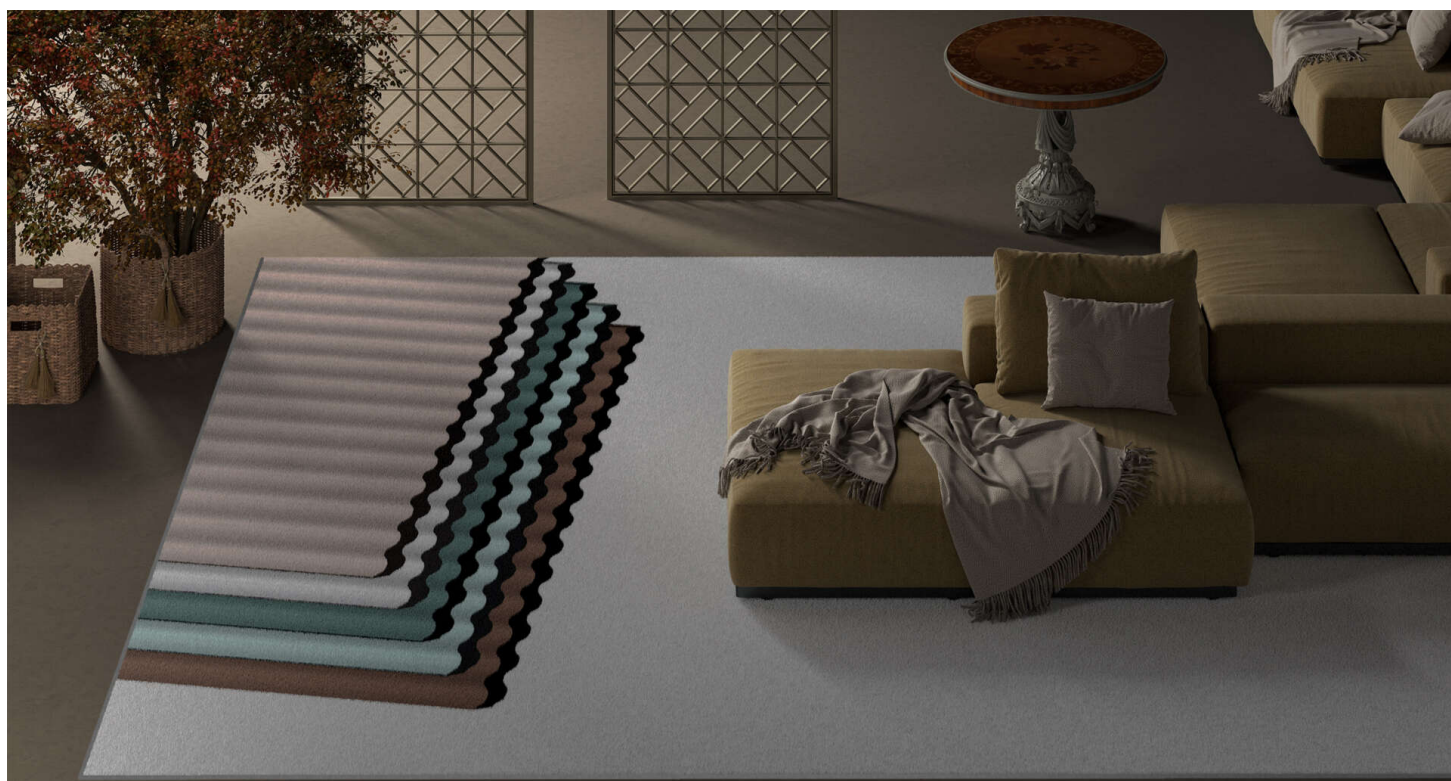




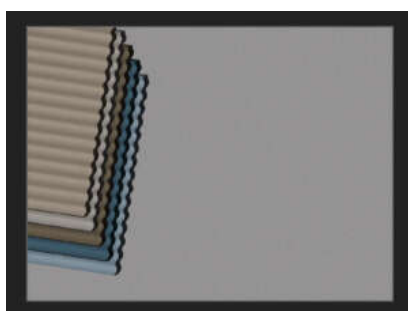
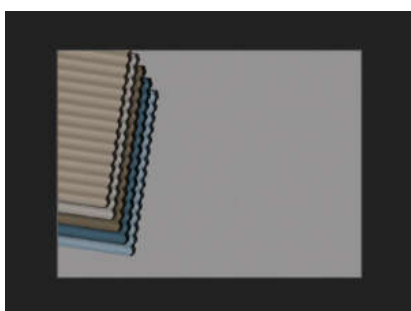
ST3.04

ST3.04.1



200 x 300 cm

300 x 400 cm

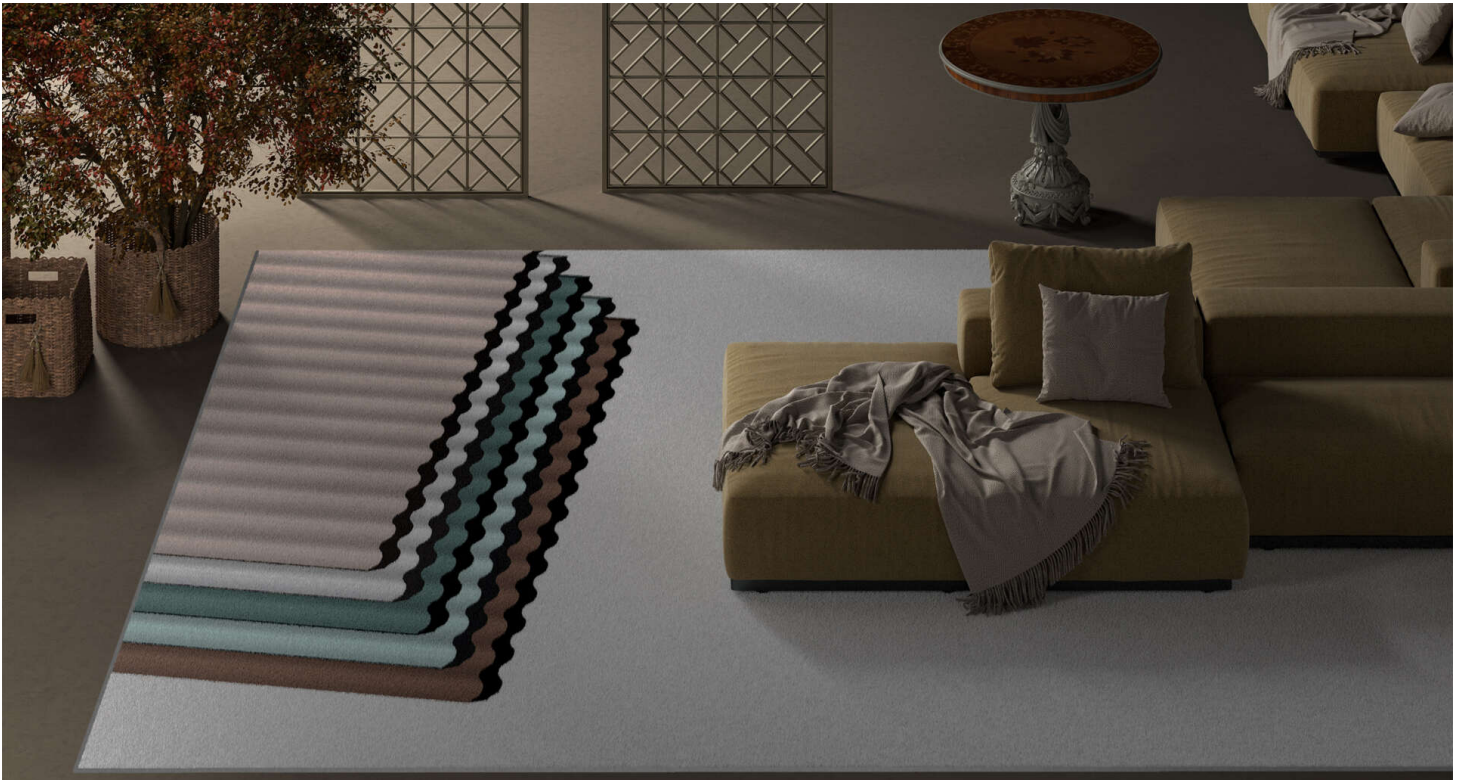


ST3.04

AVAILABLE AS BROADLOOM

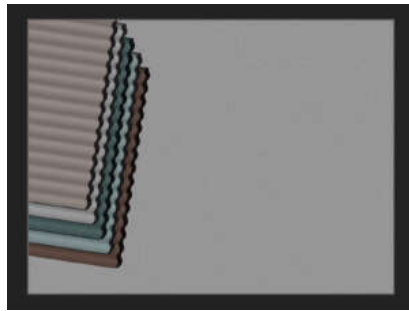
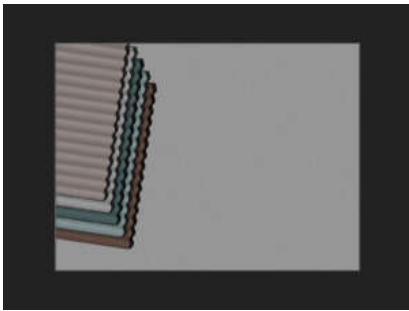
ST3.04.1

Type of manufacture:	Tufting 1/10"
Pile material:	100% PA 6.6
Structure:	Heat-set velour/Saxony
Classification for use:	23/31 commercial general
Comfort rating:	LC5
Total thickness:	Ca. 10,9 mm
Number of tufts:	Ca. 1934.775 /m2
Flammability:	Bfl – s1
Colour:	Personalized colour options
Also available in:	PA 2820 Felt



200 x 300 cm

300 x 400 cm

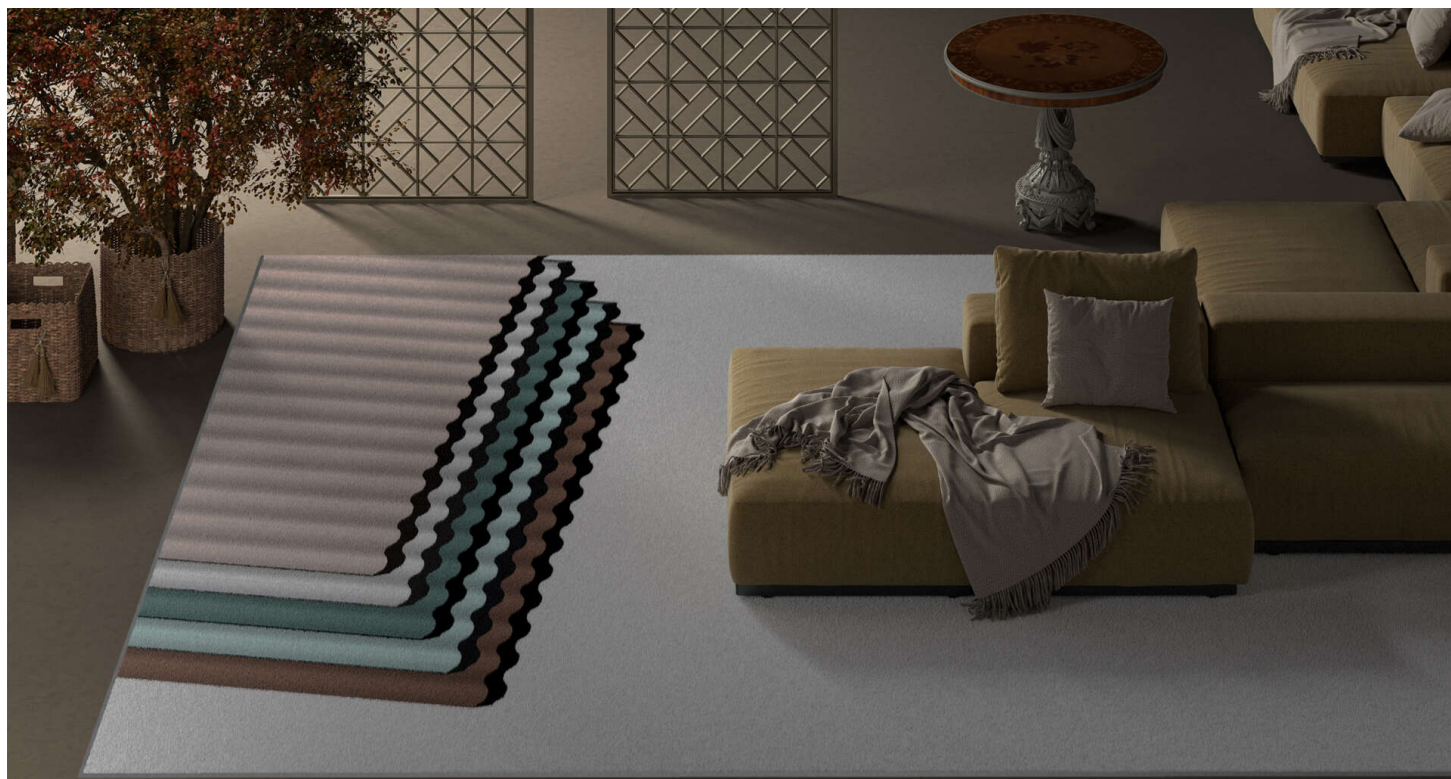


ST3.04

AVAILABLE AS BROADLOOM

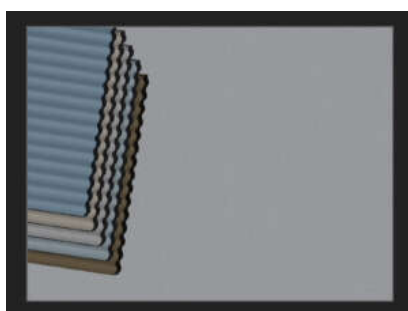
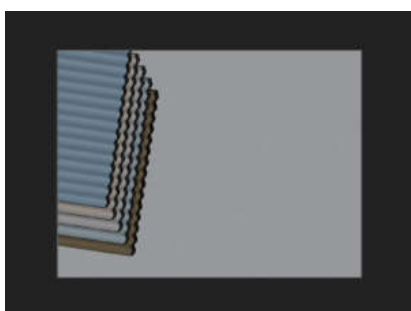
ST3.04.2

Type of manufacture:	Tufting 1/10"
Pile material:	100% PA 6.6
Structure:	Heat-set velour/Saxony
Classification for use:	23/31 commercial general
Comfort rating:	LC5
Total thickness:	Ca. 10,9 mm
Number of tufts:	Ca. 1934.775 /m2
Flammability:	Bfl – s1
Colour:	Personalized colour options
Also available in:	PA 2820 Felt



200 x 300 cm

300 x 400 cm



ST3.04

AVAILABLE AS BROADLOOM

ST3.04.3

Type of manufacture:	Tufting 1/10"
Pile material:	100% PA 6.6
Structure:	Heat-set velour/Saxony
Classification for use:	23/31 commercial general
Comfort rating:	LC5
Total thickness:	Ca. 10,9 mm
Number of tufts:	Ca. 1934.775 /m2
Flammability:	Bfl – s1
Colour:	Personalized colour options
Also available in:	PA 2820 Felt